



ಪಿ.ಇ.ಎಸ್. ಕಾಲೇಜ್ ಆಫ್ ಇಂಜಿನಿಯರಿಂಗ್

ಮಂಡ್ಯ - 571401 ಕರ್ನಾಟಕ.

(ವಿಶ್ವೇಶ್ವರಯ್ಯ ತಾಂತ್ರಿಕ ವಿಶ್ವವಿದ್ಯಾಲಯದ ಅಡಿಯಲ್ಲಿನ ಸ್ವಾಯತ್ತ ಸಂಸ್ಥೆ, ಕರ್ನಾಟಕ ರಾಜ್ಯ ಅನುದಾನಿತ ಸಂಸ್ಥೆ ಮತ್ತು ಯು.ಜಿ * ವಿಭಾಗಗಳು ಎನ್.ಜಿ.ಎ.ಯ ಮಾನ್ಯತೆ ಪಡೆದಿರುತ್ತದೆ).

P.E.S. COLLEGE OF ENGINEERING

MANDYA - 571401 KARNATAKA



(An Autonomous Institution under Visvesvaraya Technological University, Belagavi Aided by the Govt. of Karnataka and U.G. * Programmes are Accredited by National Board of Accreditation)

19. Electrical Grid Power Supply Connection.

ONLINE GRID CONNECTED ROOFTOP SOLAR POWER PLANT AT PESCE, MANDYA

We have installed totally 782 solar panels on roof of 4 blocks at our college campus with the generation capacity of about 250.4kW.

316 panels on GBL Block with the generation capacity of about 101.32kWp,

212 panels on ECE Block with the generation capacity of about 67.8kWp,

162 panels on Boy's Hostel with the generation capacity of about 51.84kWp,

92 panels on MBA Block with the generation capacity of about 29.44kWp

On an average solar generation will be around 30,000 units per month. This number of units generated by the solar will get deducted in the monthly electricity bill.

<u>Blocks</u>	<u>Inverter Capacity</u>	<u>Strings Detail</u>	<u>No of Modules</u>	<u>Power Generation</u>
GBL	50KW	12*20Modules=240 4*19Modules=76	316	101.32KW
MBA	30KW	3*18 Modules=54 2*19 Modules =38	92	29.4 KW
Boys Hostel	50KW	9*18 Modules =162	162	51.84 KW
ECE	2*30KW	6*20 Modules =120 2*19 Modules = 38 3*18 Modules= 54	212	67.8 KW

* U.G. Programmes : AU/CV/EC/E&E/MECH/IS Dept. are Accredited by N.B.A.

Phone : +918232-220043, 238683, 238042, Fax : +918232-222075

Website : www.pescemandya.org, Email : principal@pesce.ac.in

PRINCIPAL

P.E.S. College of Engineering
MANDYA - 571 401.

ಪಿ.ಇ.ಎಸ್. ಕಾಲೇಜ್ ಆಫ್ ಇಂಜಿನಿಯರಿಂಗ್

ಮಂಡ್ಯ - 571401 ಕರ್ನಾಟಕ.

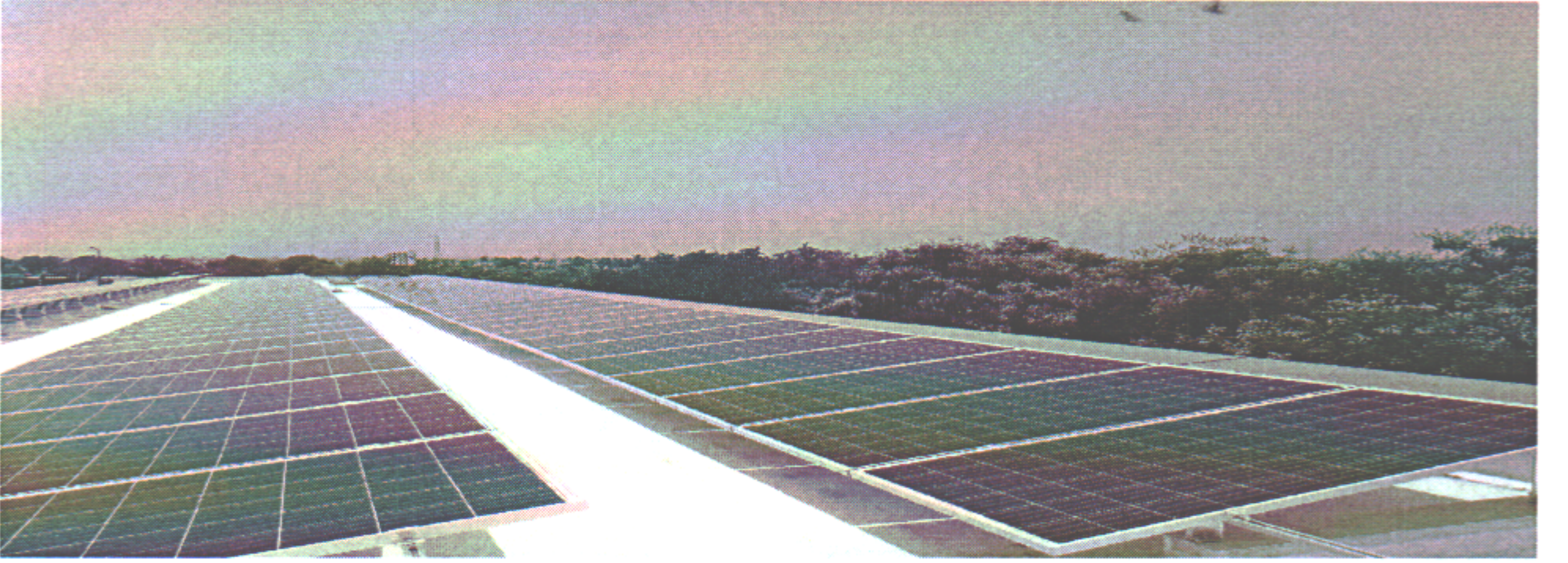
(ವಿಶ್ವೇಶ್ವರಯ್ಯ ತಾಂತ್ರಿಕ ವಿಶ್ವವಿದ್ಯಾನಿಲಯದ ಅಡಿಯಲ್ಲಿನ ಸ್ವಾಯತ್ತ ಸಂಸ್ಥೆ, ಕರ್ನಾಟಕ ರಾಜ್ಯ ಅನುದಾನಿತ ಸಂಸ್ಥೆ ಮತ್ತು ಯು.ಜಿ * ವಿಭಾಗಗಳು ಎನ್.ಜಿ.ಎ.ಯ ಮಾನ್ಯತೆ ಪಡೆದಿರುತ್ತದೆ).




P.E.S. COLLEGE OF ENGINEERING

MANDYA - 571401 KARNATAKA

(An Autonomous Institution under Visvesvaraya Technological University, Belagavi Aided by the Govt. of Karnataka and U.G. * Programmes are Accredited by National Board of Accreditation)




PRINCIPAL
P.E.S. College of Engineering
MANDYA - 571 401.

* U.G. Programmes : AU/CV/EC/E&E/MECH/IS Dept. are Accredited by N.B.A.

Phone : +918232-220043, 238683, 238042, Fax : +918232-222075

Website : www.pescemandya.org, Email : principal@pesce.ac.in

ಪಿ.ಇ.ಎಸ್. ಕಾಲೇಜ್ ಆಫ್ ಇಂಜಿನಿಯರಿಂಗ್

ಮಂಡ್ಯ - 571401 ಕರ್ನಾಟಕ.

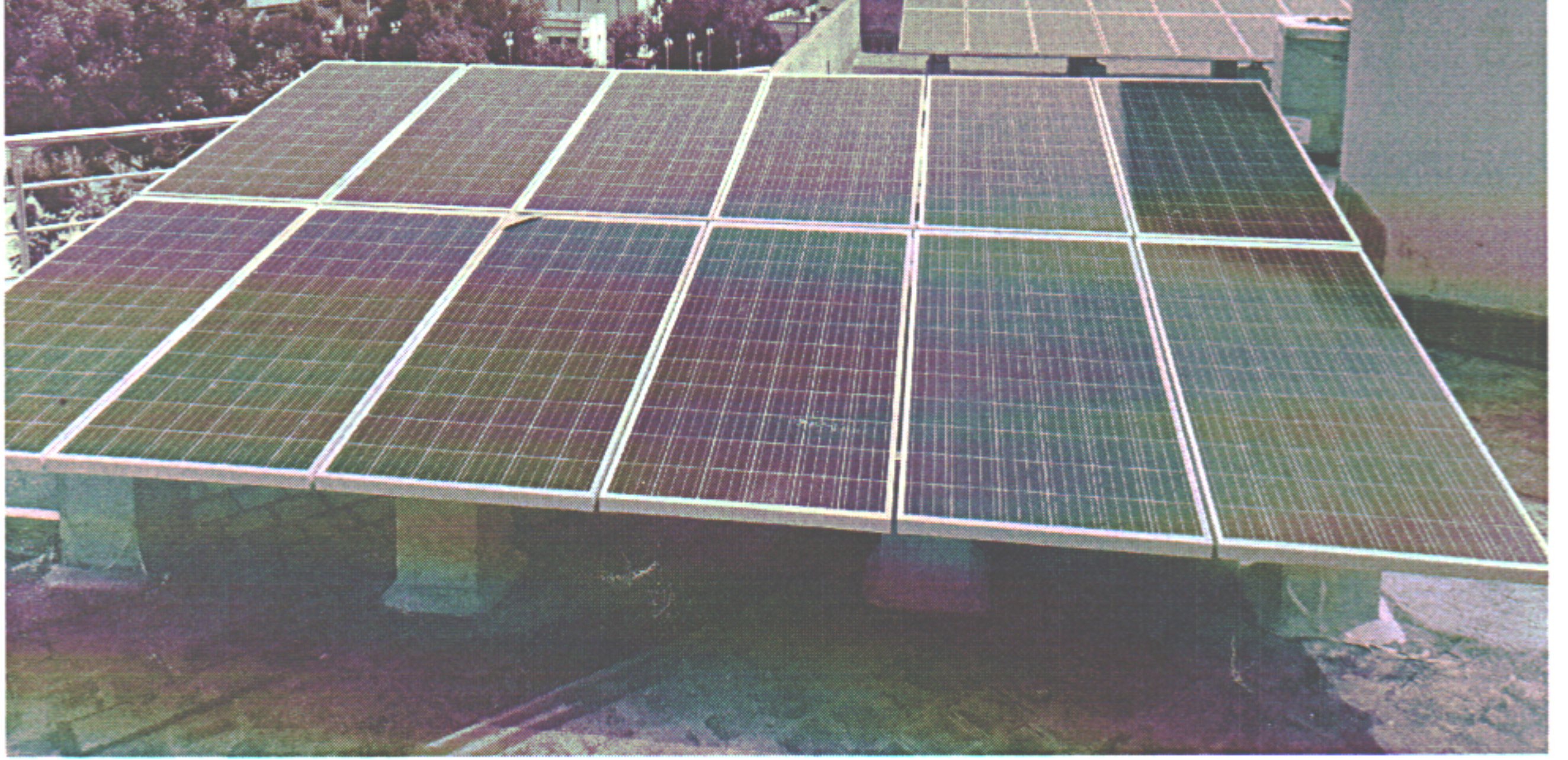
(ವಿಶ್ವವಿದ್ಯಾಲಯ ತಾಂತ್ರಿಕ ವಿಶ್ವವಿದ್ಯಾನಿಲಯದ ಅಡಿಯಲ್ಲಿನ ಸ್ವಾಯತ್ತ ಸಂಸ್ಥೆ, ಕರ್ನಾಟಕ ರಾಜ್ಯ ಅನುದಾನಿತ ಸಂಸ್ಥೆ ಮತ್ತು ಯು.ಜಿ * ವಿಭಾಗಗಳು ಎನ್.ಇ.ಎ.ಯ ಮಾನ್ಯತೆ ಪಡೆದಿರುತ್ತದೆ).



P.E.S. COLLEGE OF ENGINEERING

MANDYA - 571401 KARNATAKA

(An Autonomous Institution under Visvesvaraya Technological University, Belagavi Aided by the Govt. of Karnataka and U.G. * Programmes are Accredited by National Board of Accreditation)



Details of energy generation and saving from solar power plant:

Total investment for the online grid connected solar power plant = Rs1.6 Crores

SOLAR DETAILS 2019

Month	Consumed energy in KWH(KEB)	Generated energy in KWH(Solar)	Amount paid(KEB)	Amount paid(Solar)	Total amount paid	Actual amount to be paid	Savings in Rupees	Saving of energy in KW
January	20460	32960	135036	18029	315327	411675	96204	89
February	31170	33604	205722	183814	389536	453644	64108	39
March	39000	38137	257400	208609	466009	533755	67746	37
April	39090	35397	257994	193621	451615	521116	69501	44
May	42390	35740	288252	195498	483749	551276	67527	29
June	32700	23968	222360	131105	353465	396562	43097	16
July	33405	23247	227154	127161	354315	402063	47748	24
August	39765	23848	270402	130449	400851	448582	47731	23
September	39120	25480	266016	139376	405392	463556	58146	35
October	40280	28640	273504	156661	430225	488614	58389	29
November	37230	30078	253164	164527	417691	489518	71827	46
December	34485	31498	234987	187085	422072	446446	63056	39

Phone : +918232-220043, 238683, 238042, Fax : +918232-222075

Website : www.pescemandya.org, Email : principal@pesce.ac.in

Principal

ಪಿ.ಇ.ಎಸ್. ಕಾಲೇಜ್ ಆಫ್ ಇಂಜಿನಿಯರಿಂಗ್

ಮಂಡ್ಯ - 571401 ಕರ್ನಾಟಕ.

(ವಿಶ್ವವಿದ್ಯಾಲಯ ತಾಂತ್ರಿಕ ವಿಶ್ವವಿದ್ಯಾಲಯದ ಅಡಿಯಲ್ಲಿ ಸ್ವಾಯತ್ತ ಸಂಸ್ಥೆ, ಕರ್ನಾಟಕ ರಾಜ್ಯ ಅನುದಾನಿತ ಸಂಸ್ಥೆ ಮತ್ತು ಯು.ಜಿ * ವಿಭಾಗಗಳು ಎನ್.ಇ.ಎ.ಯ ಮಾನ್ಯತೆ ಪಡೆದಿರುತ್ತದೆ).



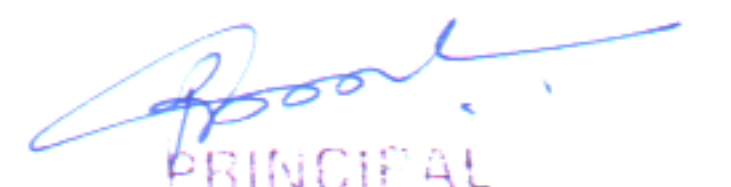
P.E.S. COLLEGE OF ENGINEERING

MANDYA - 571401 KARNATAKA

(An Autonomous Institution under Visvesvaraya Technological University, Belagavi Aided by the Govt. of Karnataka and U.G. * Programmes are Accredited by National Board of Accreditation)

Month	Consumed energy in KWH(KEB)	Generated energy in KWH(Solar)	Amount paid(KEB)	Amount paid(Solar)	Total amount paid	Actual amount to be paid	Savings in Rupees
January	31935	33220	175848	181713	357561	443054	85493
February	37580	35089	227970	191937	419907	494149	74242
March	34740	37669	170340	206049	376389	492381	115992
April	23175	29253	81396	160014	241410	356510	115100
May	24765	25830	128520	141290	269810	344046	74236
June	25665	27864	137496	152416	289912	363997	74085
July	22875	24149	94248	132095	226343	319763	93420
August	25950	24417	135456	133561	269017	342495	73478
September	27405	23396	151776	127976	269017	345446	76429
October	27090	26163	135864	143112	278976	362120	83144
November	28365	23281	146992	127347	274339	364104	89765
December	31035	26556	179563.5	145261	324824.5	406016.5	81192

SOLAR DETAILS 2020



PRINCIPAL

P.E.S. College of Engineering
MANDYA - 571 401.

* U.G. Programmes : AU/CV/EC/E&E/MECH/IS Dept. are Accredited by N.B.A.

Phone : +918232-220043, 238683, 238042, Fax : +918232-222075

Website : www.pescemandya.org, Email : principal@pesce.ac.in

ಪಿ.ಇ.ಎಸ್. ಕಾಲೇಜ್ ಆಫ್ ಇಂಜಿನಿಯರಿಂಗ್

ಮಂಡ್ಯ - 571401 ಕರ್ನಾಟಕ.

(ವಿಶ್ವವಿದ್ಯಾನಿಲಯ ತಾಂತ್ರಿಕ ವಿಶ್ವವಿದ್ಯಾನಿಲಯದ ಅಡಿಯಲ್ಲಿನ ಸ್ವಾಯತ್ತ ಸಂಸ್ಥೆ, ಕರ್ನಾಟಕ ರಾಜ್ಯ ಅನುದಾನಿತ ಸಂಸ್ಥೆ ಮತ್ತು ಯು.ಜಿ * ವಿಭಾಗಗಳು ಎನ್.ಇ.ಎ.ಯ ಮಾನ್ಯತೆ ಪಡೆದಿರುತ್ತದೆ).




P.E.S. COLLEGE OF ENGINEERING

MANDYA - 571401 KARNATAKA

(An Autonomous Institution under Visvesvaraya Technological University, Belagavi Aided by the Govt. of Karnataka and U.G. * Programmes are Accredited by National Board of Accreditation)

SOLAR DETAILS 2021

Month	Consumed energy in KWH(KEB)	Generated energy in KWH(Solar)	Amount paid(KEB)	Amount paid(Solar)	Total amount paid	Actual amount to be paid	Savings in Rupees	Saving of energy in KW
January	33720	27227	202934	148932	351866.3	429676.4	77810	4935
February	39840	28518	252319	155993	408312.5	481923.9	73611	4050
March	32550	30776	208856	168345	377201.3	446448.3	69247	2925
April	31500	31458	188235	172075	360310	443853.9	83544	4800
May	19500	32541	137475	177999	315474	366889.1	51415	0
June	24660	21891	52445	119744	172189.3	332839.7	160650	17325
July	35340	18193	238202	99516	337718.3	382761	45042	2025
August	36000	23572	235950	128939	364889	425939.8	61050	3000
September	27000	23953	193050	131023	324073	364313.9	40240	0
October	36000	24459	235950	133791	369741	432281.9	62540	3000
November	40500	16103	268125	88083	356208	404711.5	48503	3000
December	39000	24563	257400	134360	391760	454475.5	62715	3000


PRINCIPAL
P.E.S. College of Engineering
MANDYA - 571401.

* U.G. Programmes : AU/CV/EC/E&E/MECH/IS Dept. are Accredited by N.B.A.

Phone : +918232-220043, 238683, 238042, Fax : +918232-222075

Website : www.pescemandya.org, Email : principal@pesce.ac.in